

Finger Lakes Community College

Emergency Action and Response Plan

Site Specific Information



Child Care Center
3285 Marvin Sands Dr.
Canandaigua, NY 14424

Table of Contents

11. Site Specific Information.....	3
11.1. Site Contacts	3
11.2. Emergency Responders	3
11.3. Evacuation Route Maps.....	4
11.4. Areas of Refuge.....	5
11.5. Assembly Areas.....	5

11. Site Specific Information

11.1. Site Contacts

Role	Position or Name	Office Phone
Plan Administrator	Matthew McGrath, FLCC Chief of Campus Police	(585)785-1437
Fire Contact	Derrick Smith, FLCC Assistant Chief of Campus Police	(585) 785-1471
EHS & Facilities Contact	Catherine Ahern, Director of Facilities	(585) 785-1273
Primary Site Contact	Heidi Bliss, FLCC Director, Child Care Center	(585)-785-1440

11.2. Emergency Responders

Only trained emergency responders are assigned to perform medical or rescue duties. No other employees are assigned to perform medical or rescue duties during emergencies. Rescue and medical assistance for injured persons will be provided by:

- Hopewell Fire District
- Canandaigua Ambulance
- Finger Lakes Ambulance
- Campus Police
- Ontario County Sheriff
- New York State Police

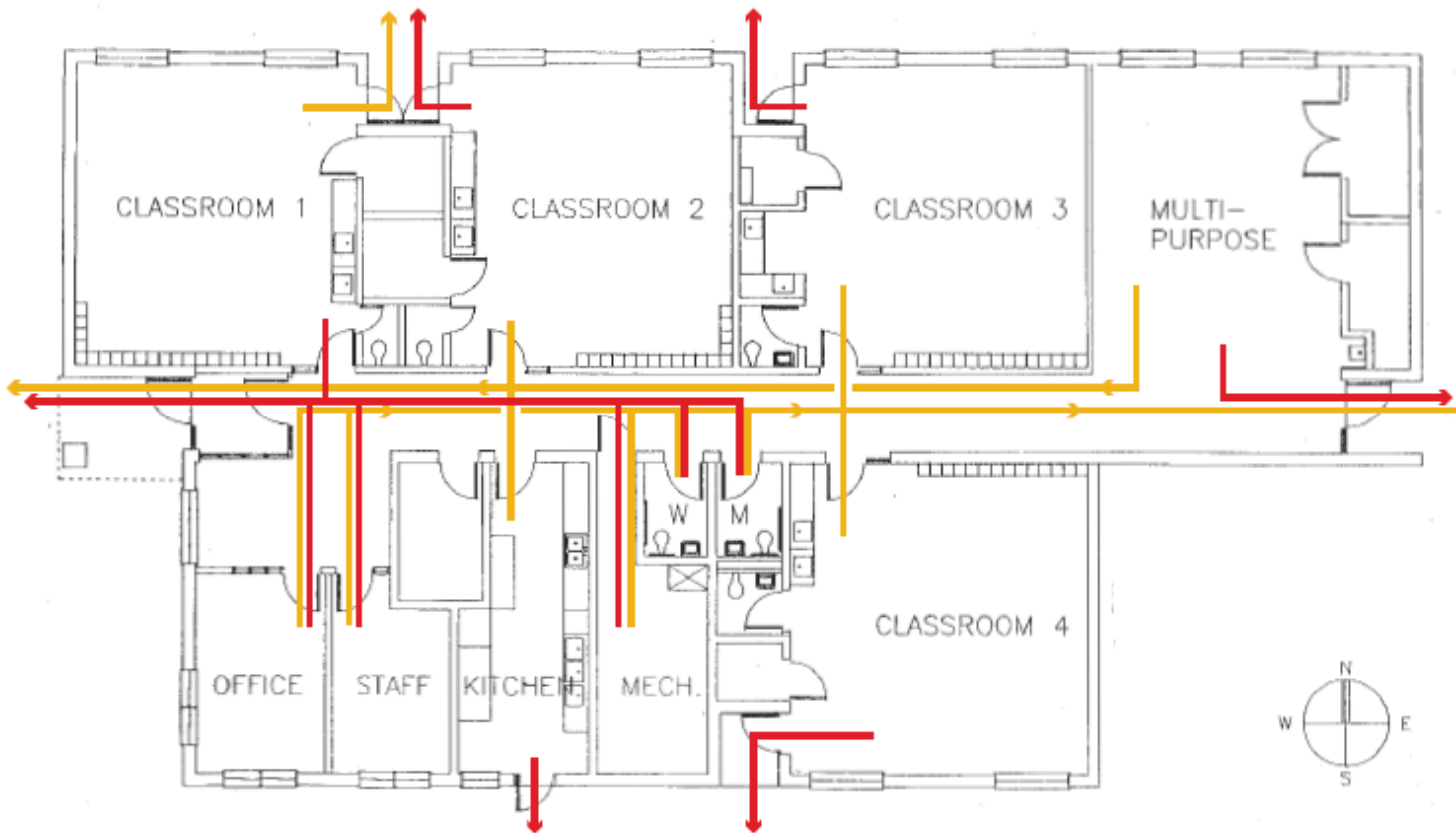
First aid and defibrillation should be provided by trained persons only.

11.3. Evacuation Route Maps

FLCC Child Care Center

- Primary Evacuation Route
- Secondary Evacuation Route

Exit building.
Move 50 feet away from building.



11.4. Areas of Refuge

There are no Areas of Refuge at this site.

11.5. Assembly Areas

